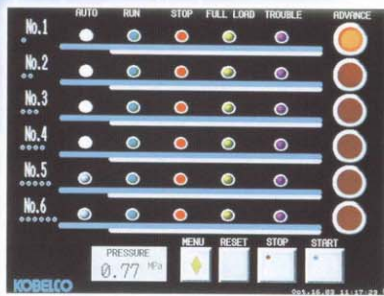


EconoMild II

TOTAL CONTROL SYSTEM II

KOBELCO

— New Powerful Econo Mild. —



Offering advanced features with enhanced operability.

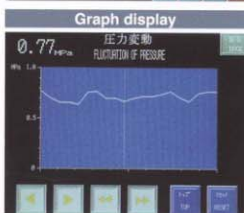
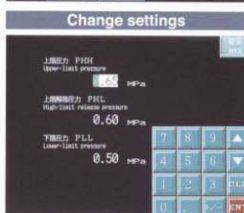
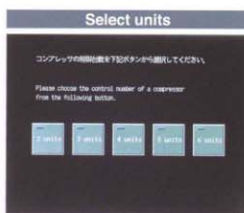
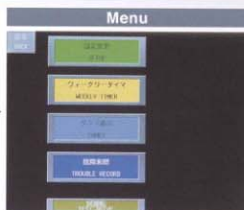


When using multiple compressors, the system ensures efficient energy-saving control.

- The system automatically selects and controls the optimum number of units in accordance with airflow needs.
- Two to six compressors can be connected to the system.
- The system supports multiple-unit operation including a Kobelco inverter-equipped compressor.

Operability is enhanced by a touch panel color LCD monitor

- An easy-to-view and easy-to-use, touch panel full color LCD monitor is included.
- Just touch the screen to select the number of units and make settings.
- Fault history monitoring system installed



Previously optional features are included as standard

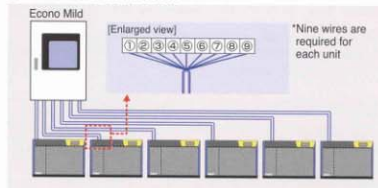
- The following previously optional four features are included as standard.
- Momentary interruption protection (within 0.5 second), automatic recovery from power failure
 - Timer to switch from the first to the second compressor
 - Weekly timer
 - Support for multiple-unit operation including an inverter compressor

Easy connection with a modular cable

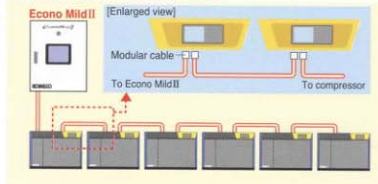
The Econo Mild II and compressors can be connected with a modular cable. The compressors can be connected with each other in a multi-drop configuration.

*Units without a new monitor or conventional units must be connected with a plug.

■ Conventional connection

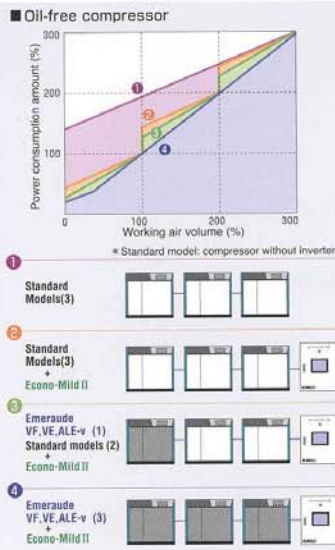
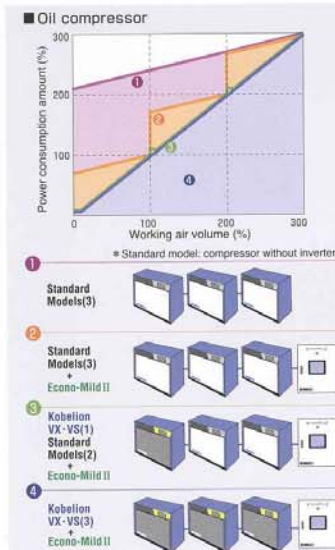


■ Connection for the Econo Mild II

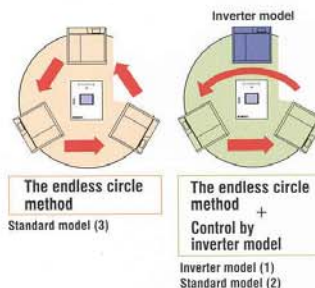


Since Kobe Steel perfected Japan's first domestically produced compressor in 1915, KOBELCO has been at the forefront of Japanese innovation in compressor technology, responding with dedication to each new challenge and need. As evidenced by its success at marketing Japan's first screw compressor in 1956, KOBELCO continues today to reaffirm its commitment to developing the most innovative technology, proven quality, and industry leadership.

Precise control for different model types



When using standard models, the endless circle method is used to balance operating hours and numbers of compressor starts for all models. When using inverter models, units are operated for load control, to achieve ideal working conditions in air consumption maintaining a stable level of air pressure.



● **Optimum control for all combinations**
Support for standard model (Kobelco compressors without inverter) only, a combination of standard model and a Kobelco inverter model, and Kobelco inverter model only.

Specifications

Item	Description	Item	Description
Voltage	AC100 V [200 V] . 50/60 Hz, 1φ	Operation screen switch	Automatic operation ON/OFF
Power consumption	Less than 200 VA		Fault reset
Control pressure	0~0.98 MPa	Input signal	Select first starting unit
Nominal dimensions	2~6 units		Setting
	Width (mm)	Depth (mm)	Height (mm)
	600	250	700
Weight	Installation method: wall-hang type		Select remote operation (for each unit)
	36kg		Operation (for each unit)
Paint color	Cream (Munsell No.2.5Y9/1)	Output signal	Fault (for each unit)
Digital pressure display	Line pressure (0.00~0.98 MPa)		Start command (for each unit)
Screen LED display	Automatic START/STOP		Stop command (for each unit)
	Automatic operation (for each unit)		Load command (for each unit)
Control pressure input	Pressure sensor installed on the underside of the panel (connection diameter R1c1/4)		Operation signal output (for each unit)
Remote control	Contact point input for automatic operation START/STOP (contact point "a")	Automatic START/STOP	
		Contact point output of Automatic operation signal	
			Contact point output of Fault

KOBE STEEL, LTD.

COMPRESSOR CENTER, Machinery & Engineering Company
Yamatane Bldg., 7-12 Kabutocho, Nihonbashi, Chuo-ku, Tokyo, 103-0026, JAPAN
Tel: +81-3-5644-0017 Fax: +81-3-5644-0019

KOBELCO COMPRESSORS CORPORATION
Yamatane Bldg., 7-12 Kabutocho, Nihonbashi, Chuo-ku, Tokyo, 103-0026, JAPAN
Tel: +81-3-5644-0017 Fax: +81-3-5644-0019

KOBELCO MACHINERY ASIA PTE. LTD. KMA
60 Pandan Road, Jurong, Singapore 609294 REPUBLIC OF SINGAPORE
Tel: +65-6262-0586 Fax: +65-6261-3719

KOBELCO COMPRESSORS AND MACHINERY PHILIPPINES CORPORATION
Ground Floor, PDAF Building Buendia Ave., cor. EDSA, Makati City, Philippines
Tel: +63-2-897-8736 Fax: +63-2-897-8737

KOBELCO COMPRESSORS (AMERICA), INC.
3000 Hammond Avenue, Elkhart, in 46516, U.S.A.
Tel: +1-219-295-3145 Fax: +1-219-293-1641



Kobelco screw compressors are produced at ISO9001 and ISO14001 certified

Address inquiries to:

Econo-Mild II-1 (Specifications and descriptions herein may change without notice.) 051103S